

GAZEBO BANDSTAND @ BASHAM PARK

- A PAVILION FOR MANY USES
- IN A MUCH-APPRECIATED, CENTRAL LOCATION

SUGGESTED DESIGN STRATEGY:

AVOID STYLISTIC MIMICRY

DESIGN WITH TIME-PROVEN MINDSET
OF MINING SETTLERS
WITH APPROACH & SENSIBILITY
OF "MINE-SET"

- INTELLIGENT, SAVVY
- INVENTIVE USE OF LOCAL MATERIALS
- EFFICIENT STRUCTURE
- WILLINGNESS TO IMPROVISE

Design Guidelines, current suggestions:

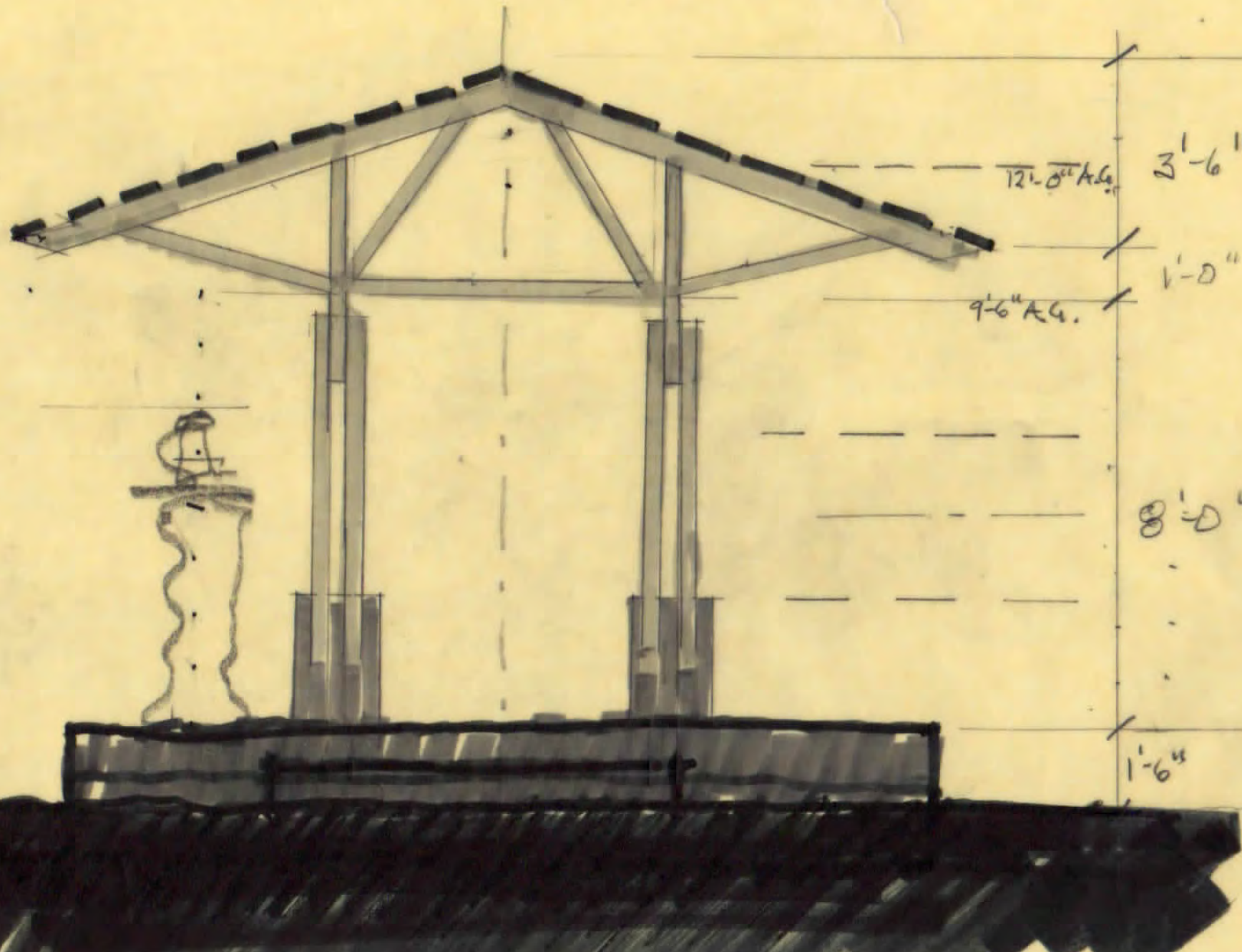
- locally-sourced wood used for all trusses, columns, tram-benches, perimeter slatted seating, and trellises. Local enquiry to be made on suitability of beetle-kill spruce.
- roofing: corrugated "Coreten" steel -- long life with non-shiney oxidised patina.
- concrete: board-cast on visible vertical faces; regionally-sourced cement has good color.
- trusses: designed for relatively light cross-section, to reflect material inventiveness of mining heritage.
- roof extends 1' beyond base platform slab, to minimise direct rain on timber. Gravel band to be below roof drip line to aid soak-away and reduce splash.
- all wood proposed to be unpainted to reduce maintenance and to resonate with appearance of mine structures.
- pressure-treatment thought to be sensible (clarification sought of local issues with pressure-treatment: issues with species choice or climate. No timber to be in contact with ground.

CHARLES "ANDERSON" INGE

SOME RELEVANT DETAILS:

- REGISTERED ARCHITECT, SINCE '83
STATE OF COLORADO REG.# 402648
- ALSO TRAINED AS STRUCTURAL
ENGINEER, M.I.T.
- EXTENSIVE EXPERIENCE WITH
COMMUNITY BUILD PROJECTS
- VISITING CREW LEADER FOR OVER 40 YRS.

... RECENT SKETCH STUDIES ...



12'-0" A.G.

3'-6"

9'-6" A.G.

1'-0"

14'-0"

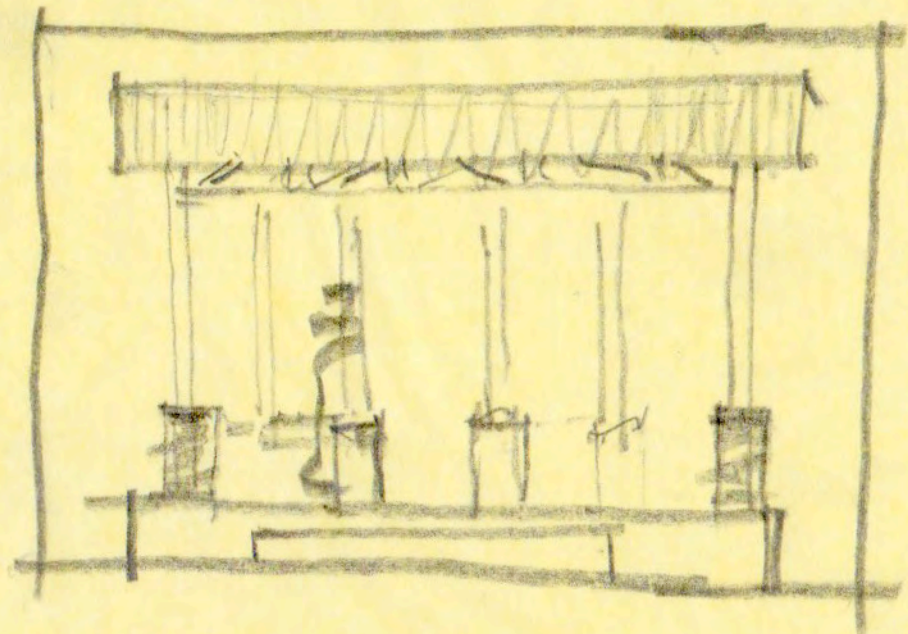
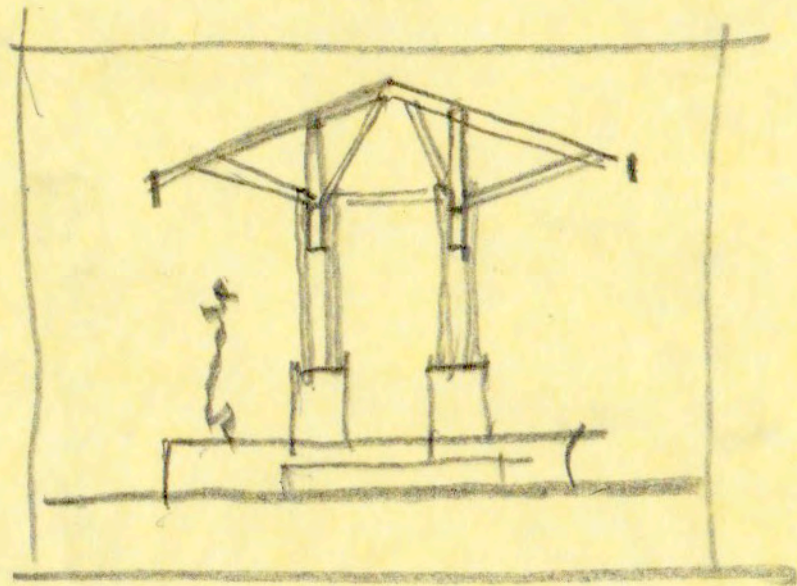
8'-0"

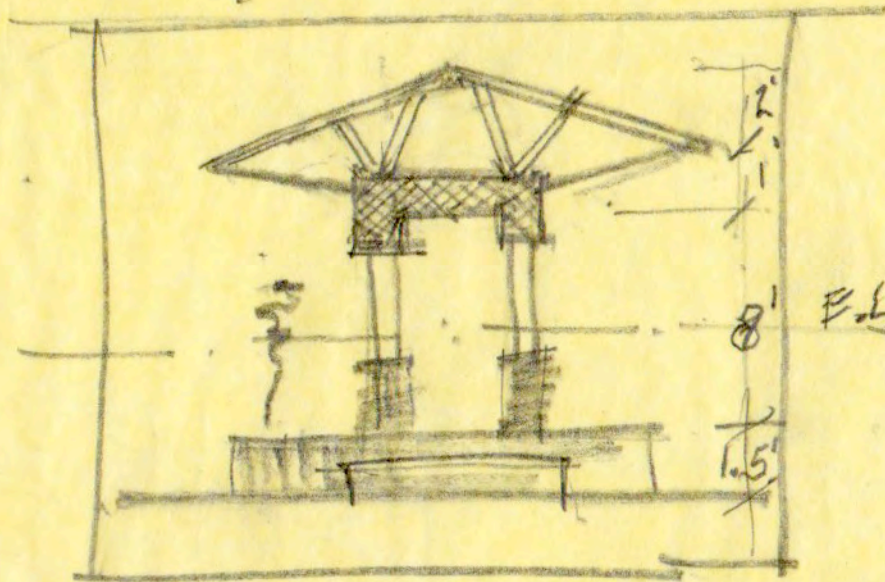
4'-0"

5'-6"

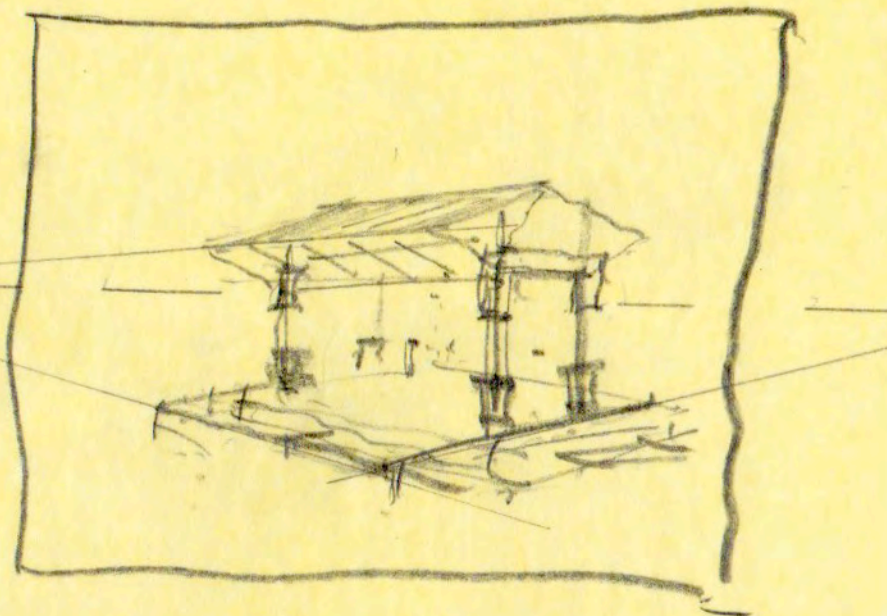
4'-0"

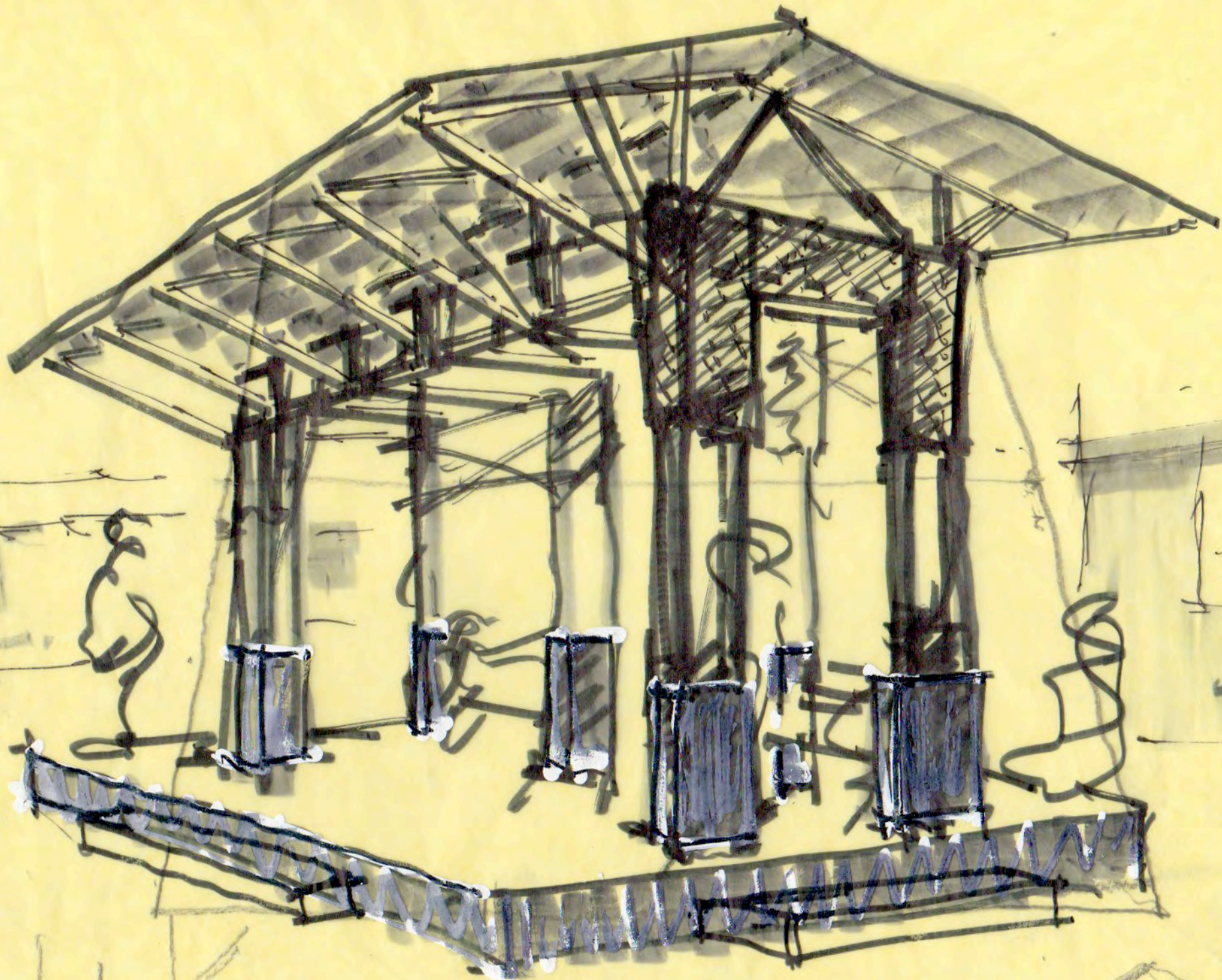
1'-6"





E.L.





Sketch of a structure

... MATERIALS TO CONSIDER ...

















... STRUCTURES TO CONSIDER ...

















D & R G W R
REAL
GREDE
ROUTE
SCENIC LINE

GREEDE

1911
1912





Fire point













