

WORK SESSION

- I. CALL TO ORDER
- II. PLEDGE OF ALLEGIANCE
- III. ROLL CALL
- IV. APPROVAL OF AGENDA
- V. EXECUTIVE SESSION
- VI. PUBLIC COMMENT

Public comment is intended for members of the public wishing to address the Board of Trustees about matters that are not listed for discussion on the agenda. Comments will be taken under advisement by the Board but no decisions will be made. At its discretion, the Board may elect to place a matter raised under public comment on a future agenda for further discussion and possible action.

- VII. PRESENTATIONS

- a. Presentation by Jeffrey Wood of the University of Colorado, Denver College of Architecture and Planning on the final conceptual design for the City of Creede Town Hall Complex;

- VIII. CONSENT AGENDA

- IX. BOARD INFORMATION ITEMS

- X. NEW BUSINESS

- a. Discussion regarding water and sewer rates for 2023;
- b. Discussion regarding funding and timeline for the Willow Creek Micro-Hydro Electric Project

- XI. OLD BUSINESS

- XII. BOARD REPORTS

- XIII. ADJOURN

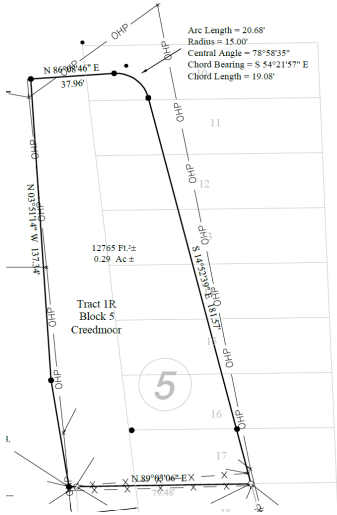
OPEN TO THE PUBLIC

POSTED 1/6/2023

CREEDE TOWN HALL & PUBLIC WORKS



SITE CONTEXT



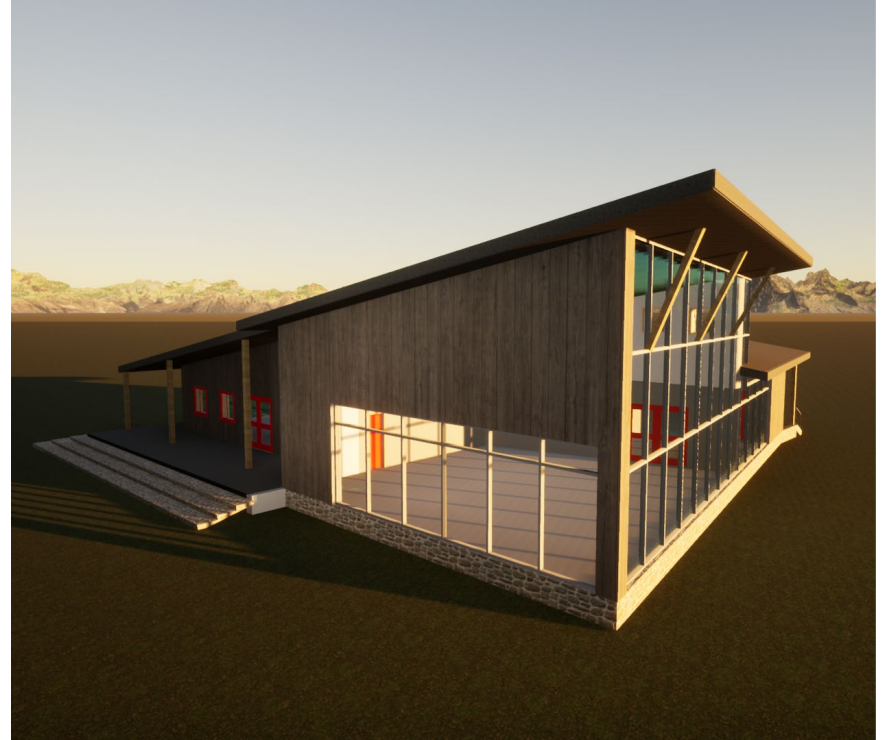


Town Hall Massing



General Massing

- River rock foundational detail
- Vertical wood siding
- Red window details
- Timber column supports
- Combinations of glazing and solid walls
- Simple roof material
- Approx. 4900 sf.



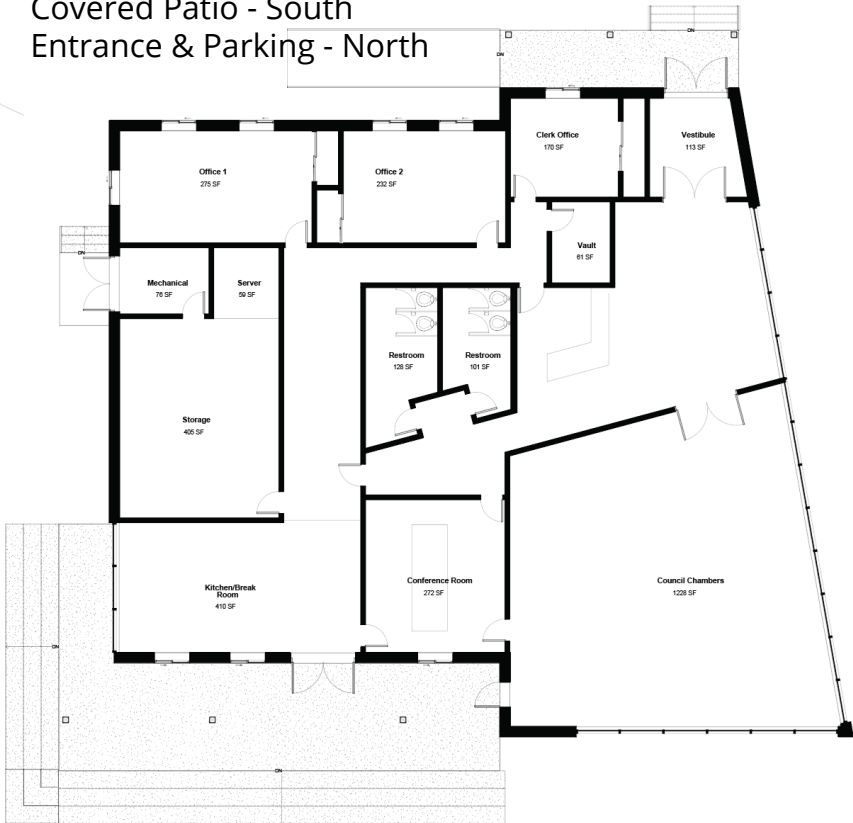


Town Hall Site Options

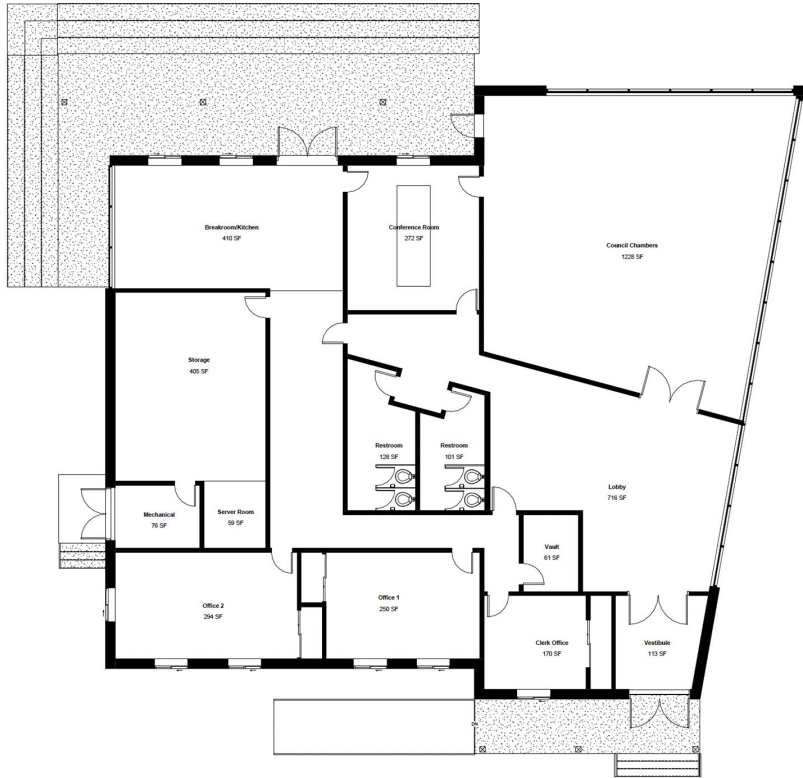


Town Hall-Scheme A (Council Chambers Facing South)

- Council Chambers - Facing South into Picnic Area
- Covered Patio - South
- Entrance & Parking - North



Town Hall-Scheme B (Council Chambers Facing North)

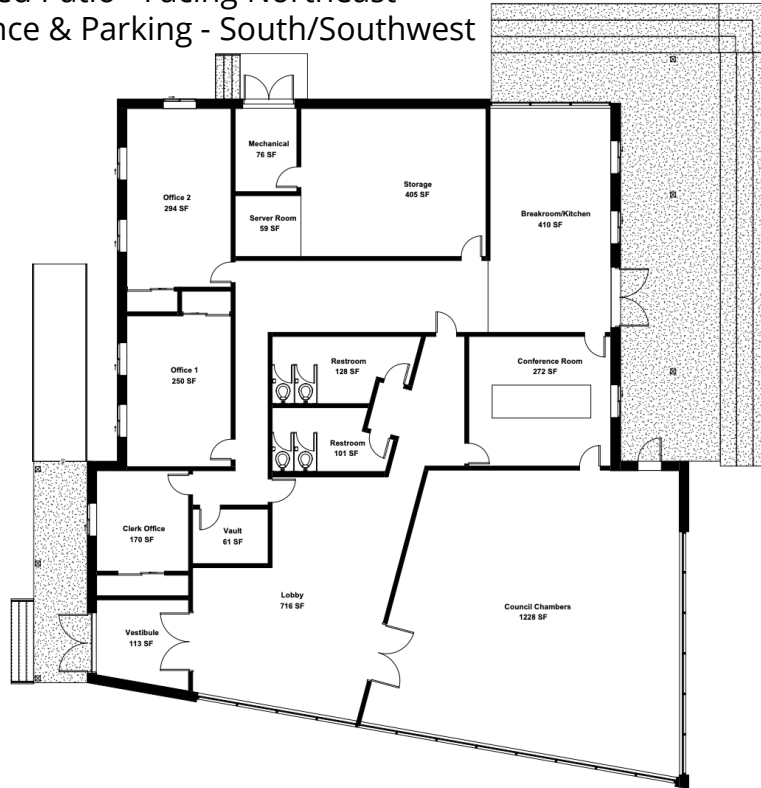


- Council Chambers - Facing North into Pocket Park
- Covered Patio - Facing North into Pocket Park
- Entrance & Parking - South



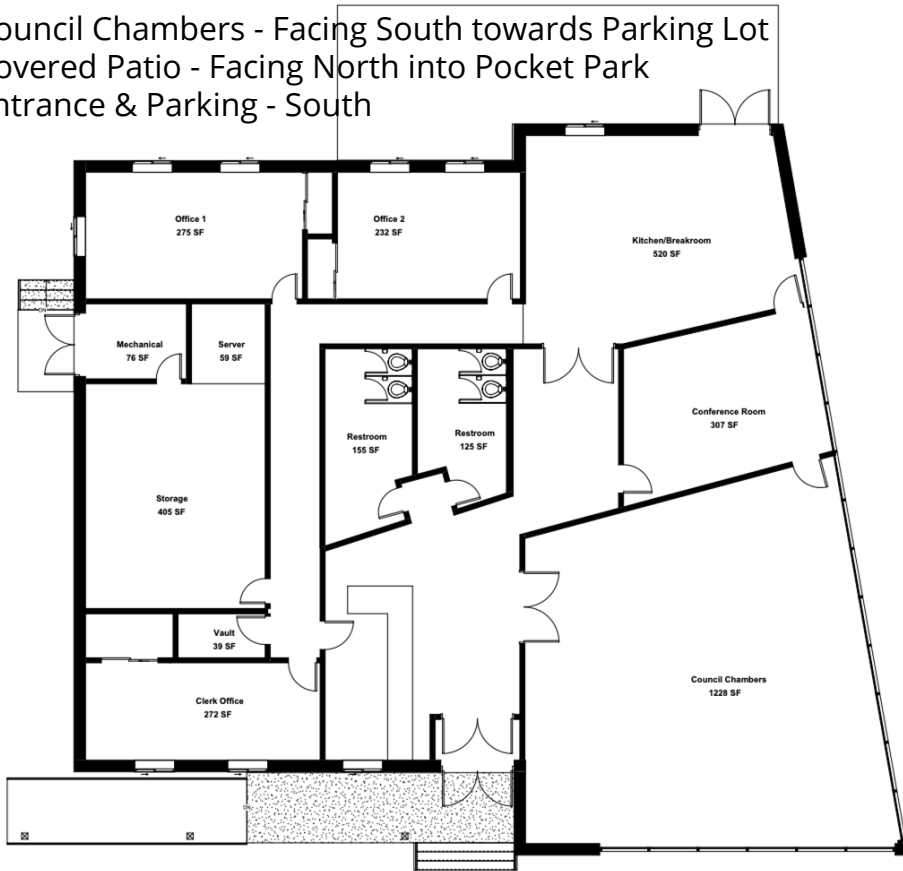
Town Hall-Scheme C (West Entrance)

- Council Chambers - Facing South/East (Parking Lot/Rock Wall)
- Covered Patio - Facing Northeast
- Entrance & Parking - South/Southwest



Town Hall-Scheme D (South Entrance, Revised Floor plan)

- Council Chambers - Facing South towards Parking Lot
- Covered Patio - Facing North into Pocket Park
- Entrance & Parking - South



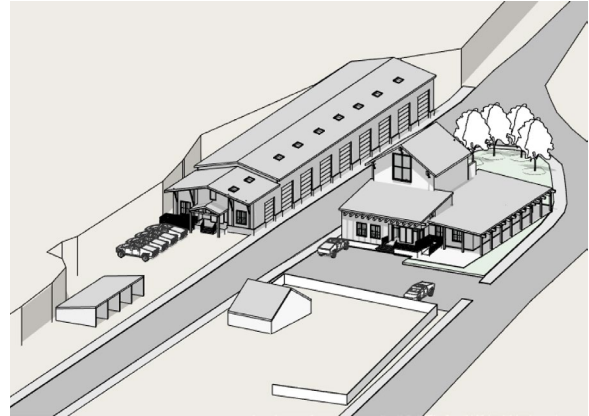


Public Works Massing



General Massing

- Sheet metal/corten steel siding
- Timber column supports and beams
- Combinations of glazing and solid walls
- Lots of windows to increase natural light throughout work spaces
- Simple roof material



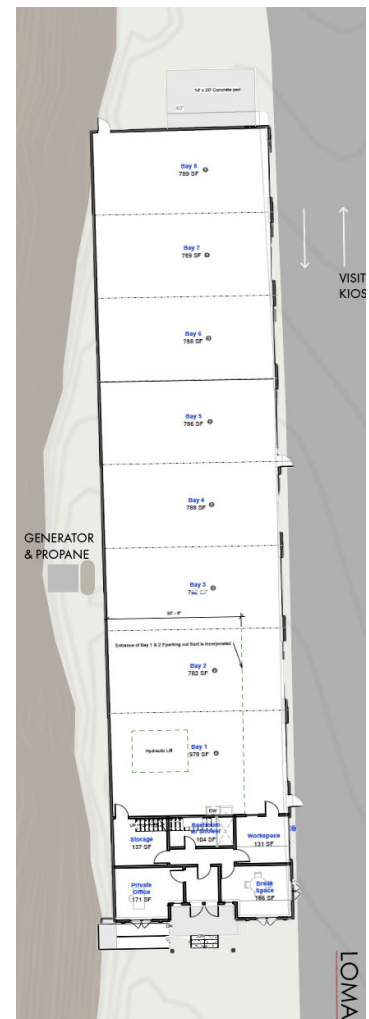
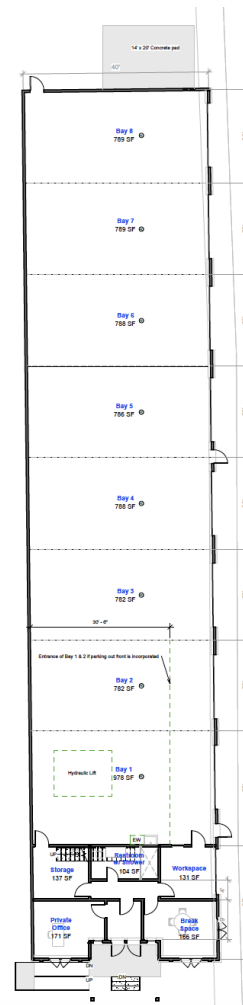
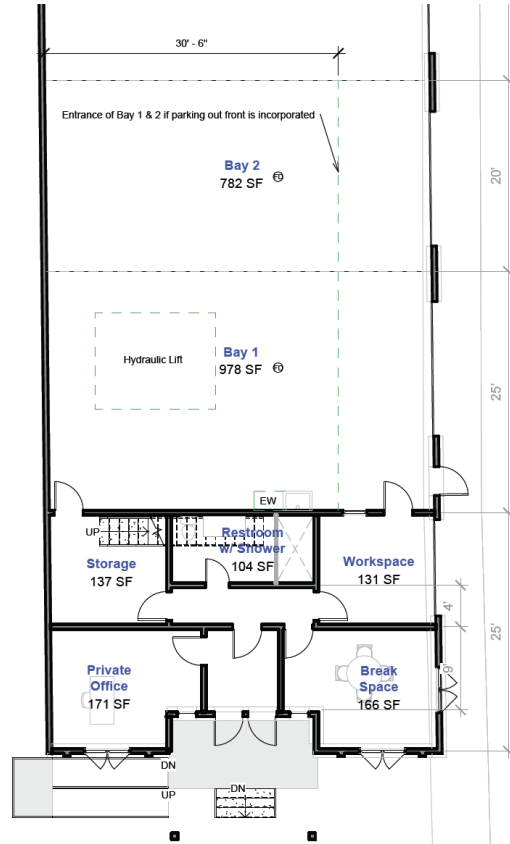


Public Works Options



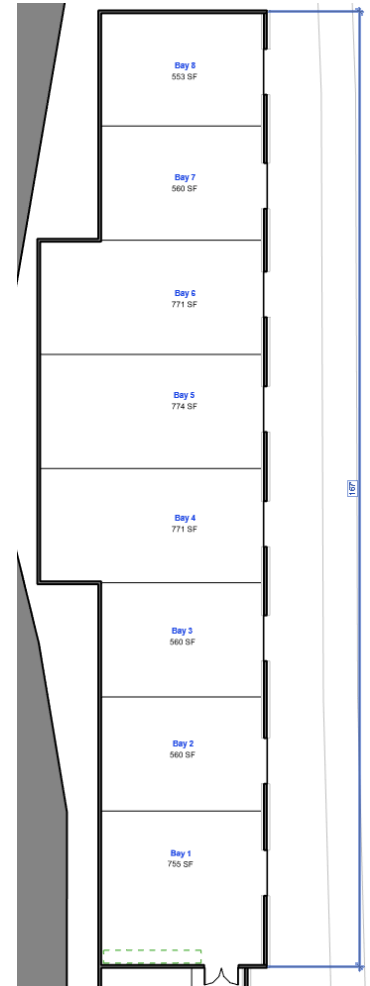
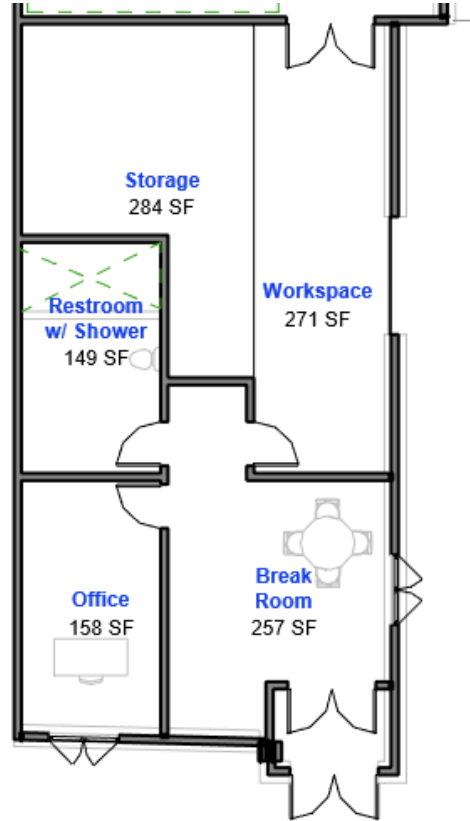
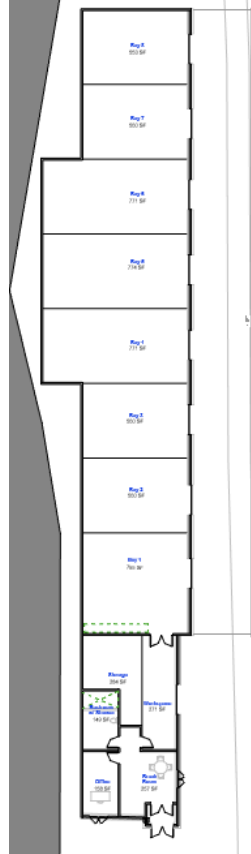
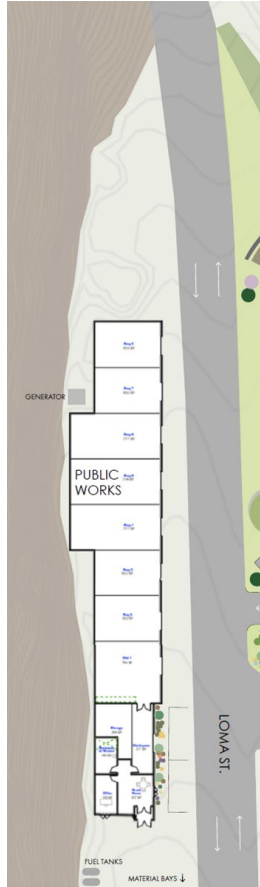
Public Works-Scheme A

Total sq. footage: 8,000



Public Works-Scheme B

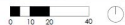
- Total sq. footage: 6,500
- 3 large 34' deep bays in the center
- 5 smaller 30' deep bays flanking the larger bays
- allows parallel parking adjacent to break room and workspace



Public Works-Scheme A



SITE PLAN WITH PUBLIC WORKS A & TOWN HALL A



SITE PLAN WITH PUBLIC WORKS A & TOWN HALL C



Potential Site Layouts-Public Works Scheme B



SITE PLAN WITH PUBLIC WORKS C & TOWN HALL B



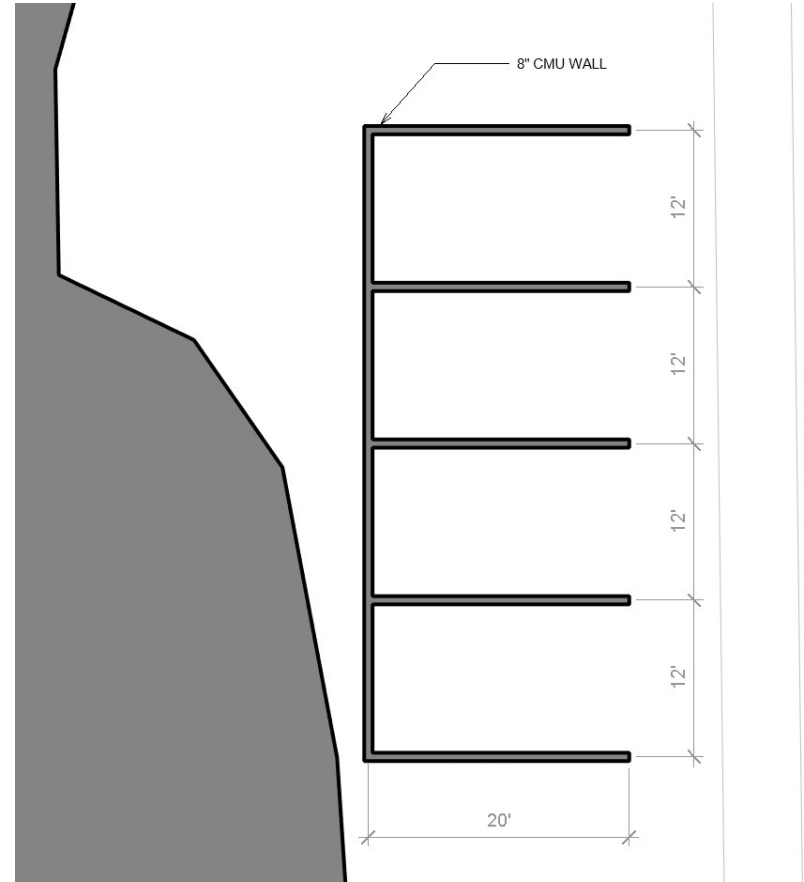
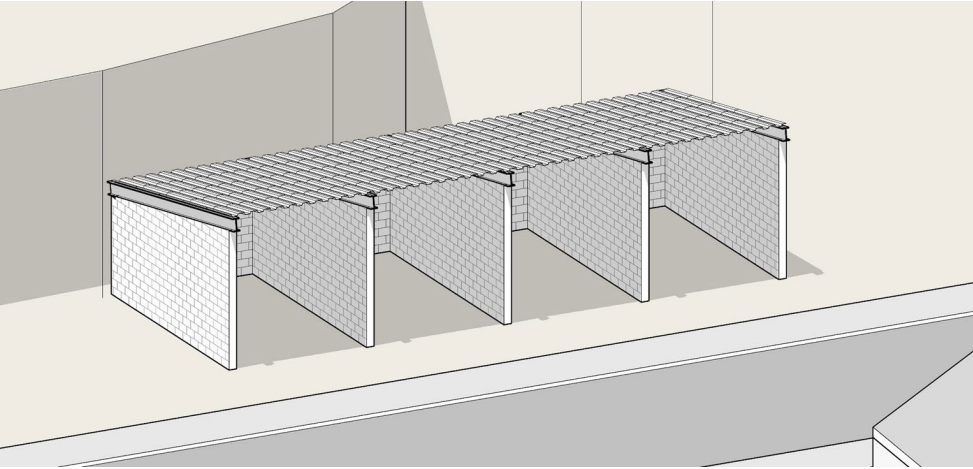
SITE PLAN WITH PUBLIC WORKS C & TOWN HALL D



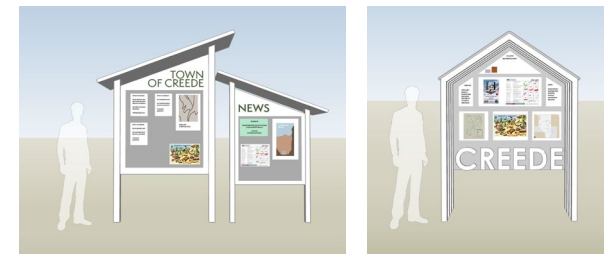
ADDITIONAL
ITEMS



Material Bay Layout



POCKET PARK & INFO KIOSKS



- Xeric grass seed mix
- Clustered shrubs and flowers
- Aspen Trees
- Irrigation System (for 1st year during establishment only)
- Bioswale/Dry Creek to move storm water away from Town Hall
- Information Kiosks
- Picnic Tables & Adirondack Chairs
- Retaining wall Northwest of existing tree-line
- Bike Rack
- Public Art Sculpture

POCKET PARK PLANT PALETTE

- Evergreens & Native Perennials
- Low Maintenance
- Pollinator-Friendly
- Colorful Flowers
- Winter Interest
- Mix of Textures



Shrubby Cinquefoil



Red Osier Dogwood



Silvery Lupine



Bearberry



Prairie Junegrass



Common Juniper



Fringed Sagewort



Winterfat



Arizona Fescue



Scarlet Gilia



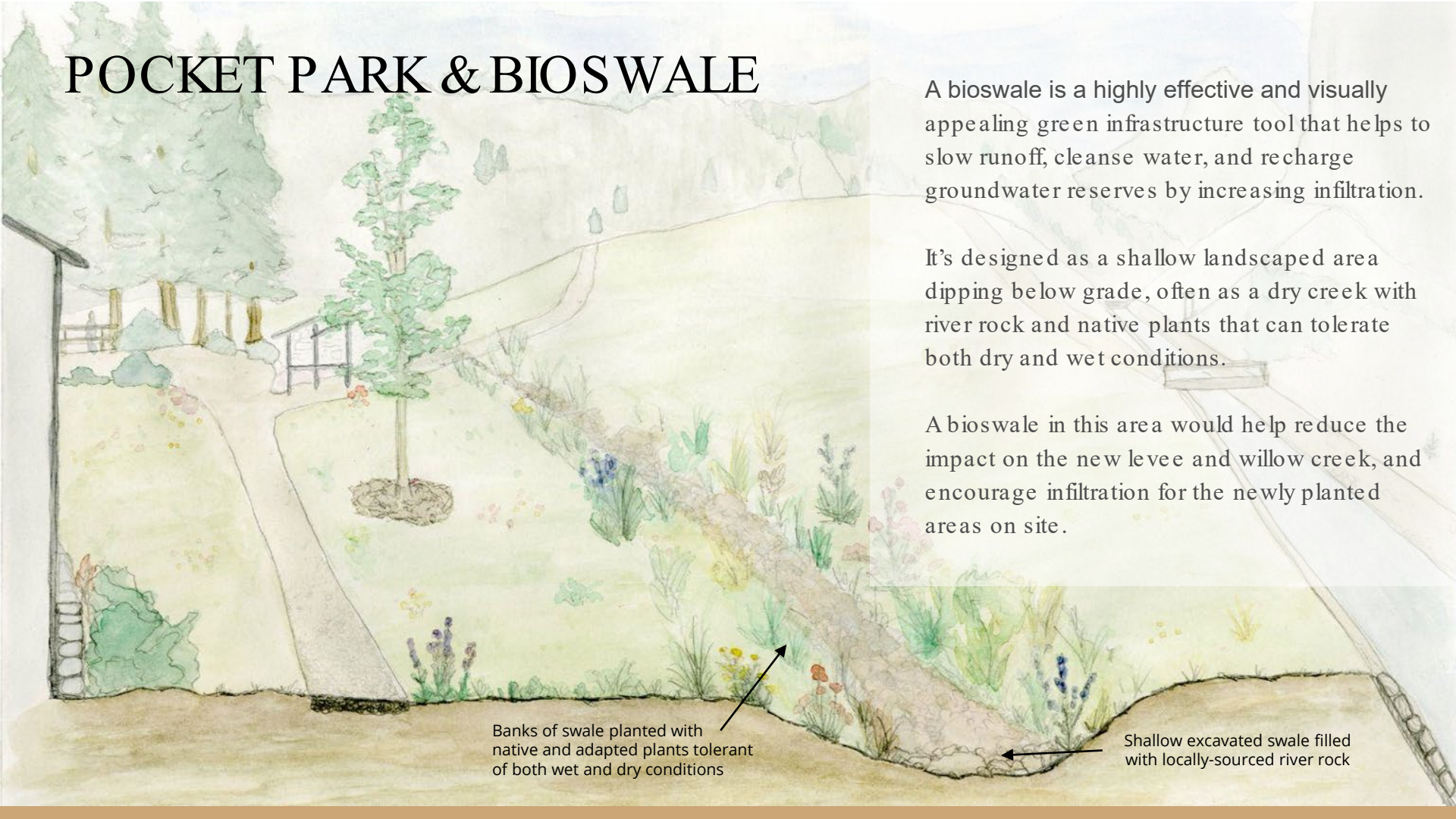
Showy Milkweed

POCKET PARK & BIOSWALE

A bioswale is a highly effective and visually appealing green infrastructure tool that helps to slow runoff, cleanse water, and recharge groundwater reserves by increasing infiltration.

It's designed as a shallow landscaped area dipping below grade, often as a dry creek with river rock and native plants that can tolerate both dry and wet conditions.

A bioswale in this area would help reduce the impact on the new levee and willow creek, and encourage infiltration for the newly planted areas on site.

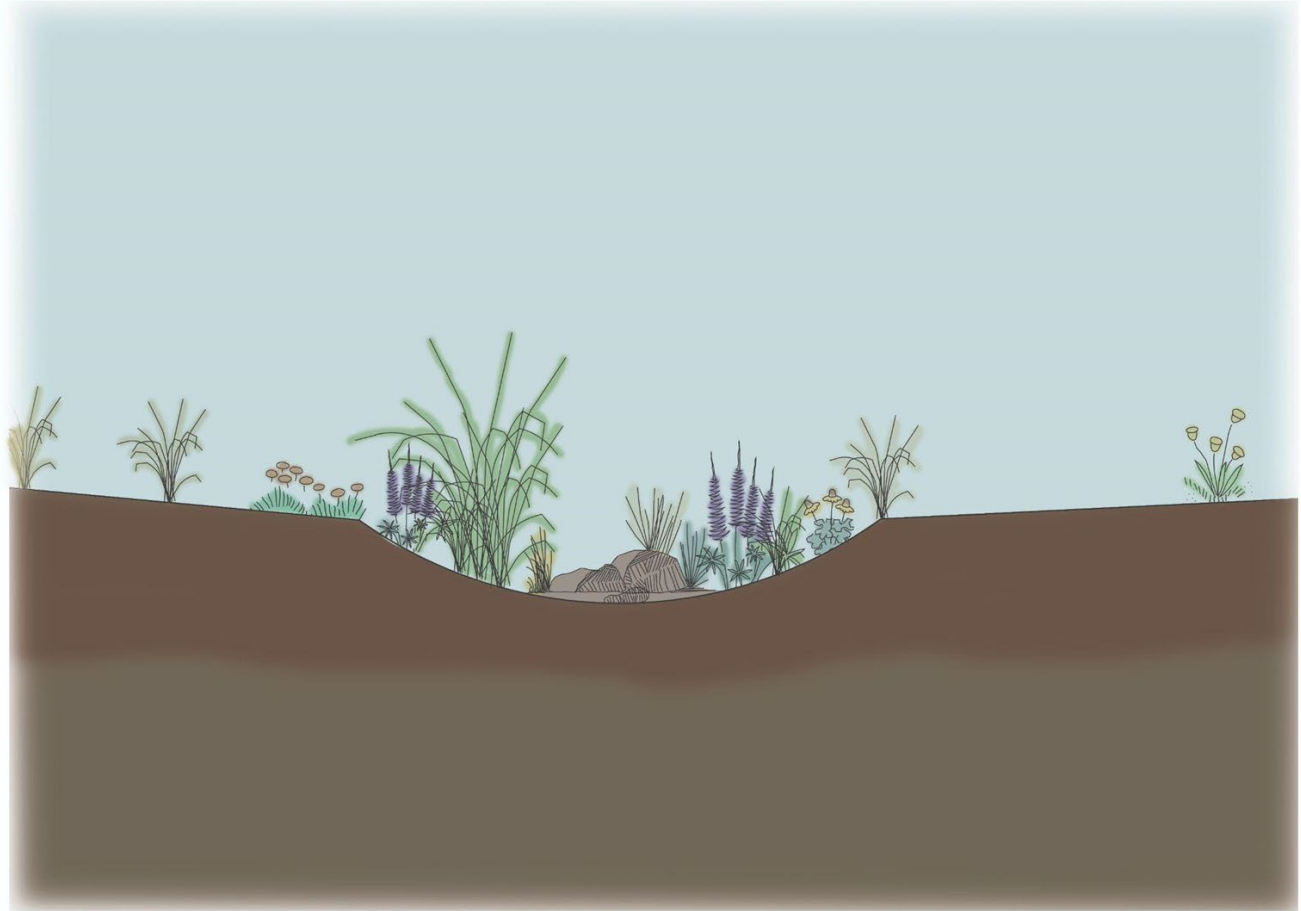


Banks of swale planted with native and adapted plants tolerant of both wet and dry conditions

Shallow excavated swale filled with locally-sourced river rock

BIOSWALE

- Swale located to enhance existing topographic drainage patterns
- Rocks and vegetation create aesthetically pleasing green infrastructure
- Slows runoff and allows pollutants to settle before reaching Willow Creek Flume
- Increases groundwater infiltration



POCKET PARK

INFORMATION KIOSKS

One kiosk for residents:

- Council Meeting Minutes & Announcements
- Public Works Notices
- Civic News
- Local Events & Workshops
- Lost & Found Notices



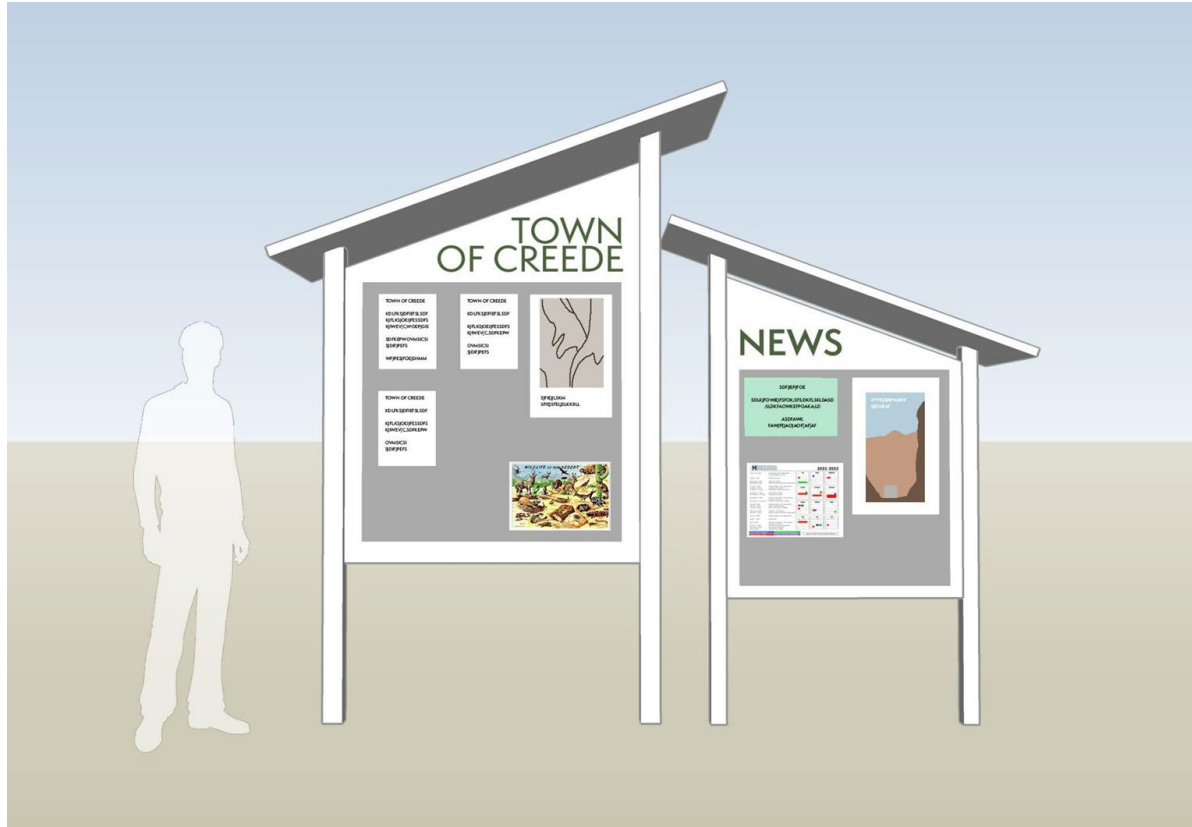
One kiosk for visitors:

- Dining
- Hiking & Orienteering
- Local Attractions
- Flora & Fauna
- Local Events

Precedent Imagery



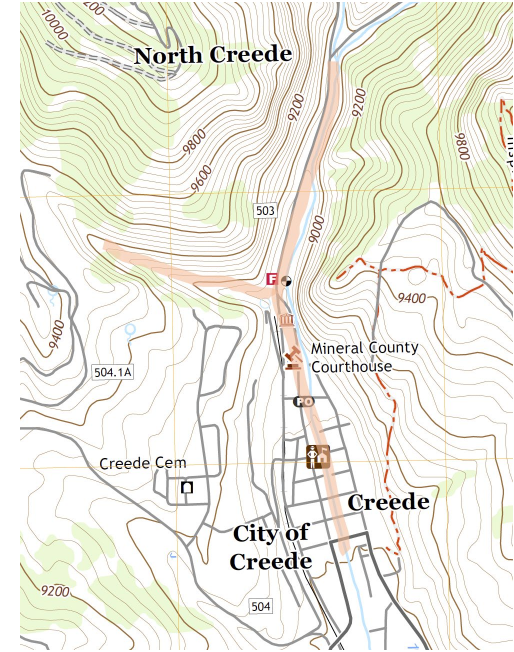
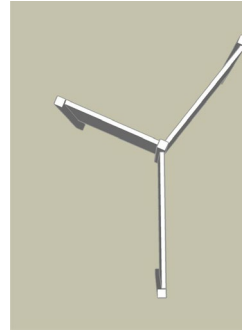
POCKET PARK INFORMATION KIOSKS



OPTION 1:
Single or Double Sided
Modular
Easy to split between town
and visitor information

POCKET PARK

INFORMATION KIOSKS



OPTION 2:

All panels double-sided

Eliminates need for multiple kiosks

Easy to split or combine town and visitor information

Inspired by topographic pattern of Creede

POCKET PARK

INFORMATION KIOSKS



OPTION 3:

Single or Double Sided

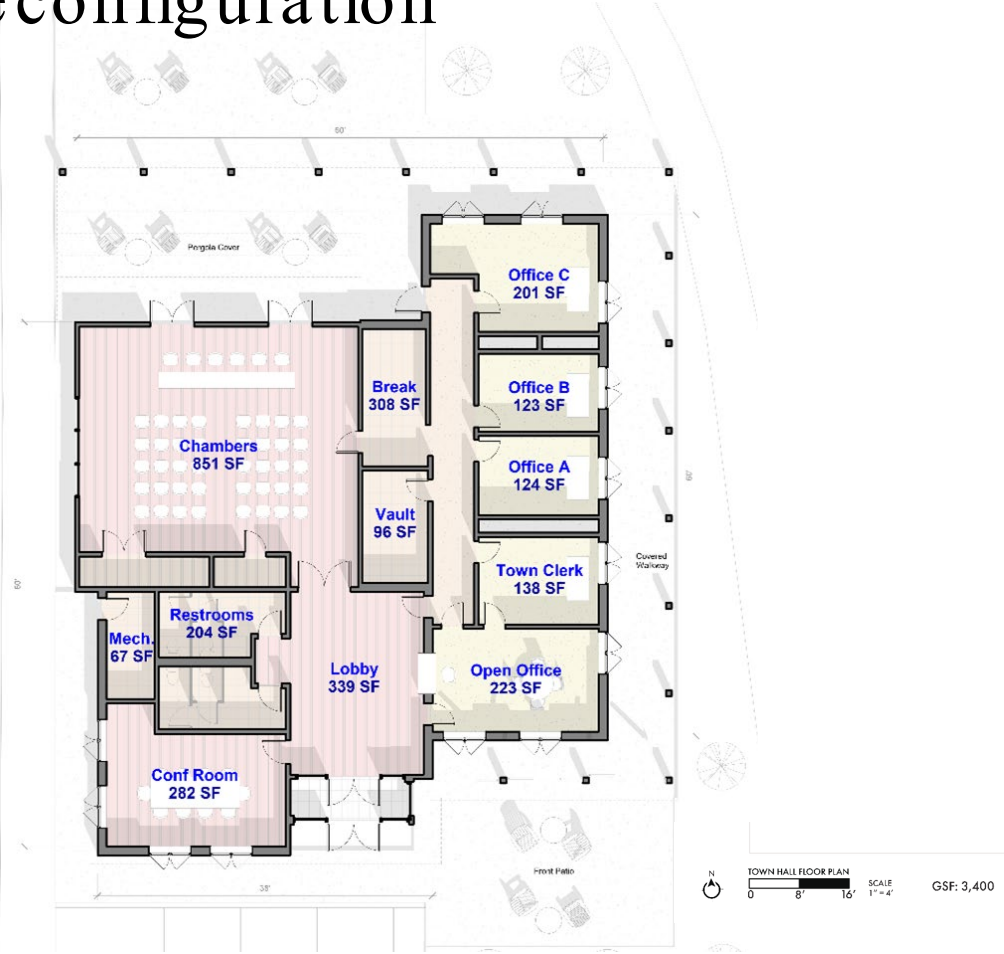
Inspired by local architecture and mining

THANK YOU!

Scheme without Road Reconfiguration



SITE PLAN WITH PUBLIC WORKS A



Scheme without Road Reconfiguration

